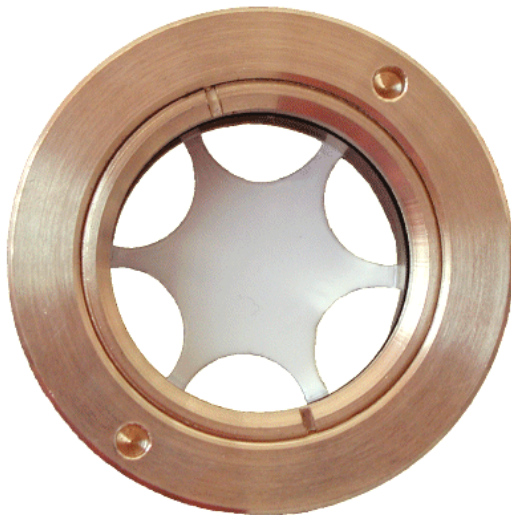




**Factory for oil sight glass fittings  
from  
Brass – Aluminium – Stainless steel**



**MECANOSOL, S.L.**

**Pol. Ind. La Pañoleta  
c./ Julio de Torres, 14  
29700 Vélez-Málaga**

**SPAIN**

**[www.mecanosol.com](http://www.mecanosol.com)**

**[info@mecanosol.com](mailto:info@mecanosol.com)**

**Tel.: +34 95 254 92 53**

**Fax: +34 95 250 76 09**

**Group A**  
**Brass oil sight glass**  
**Screwed in position from the front**



**Model: 3505....**

With fixed **brass** reflector white painted, operating pressure 4 bar, **float glass**, heat resistant up to 120°C, in accordance with DIN 31691

**Model: 3515....**

see **3505**, however without reflector

**Model: 3605....**

With fixed **brass** reflector white painted, operating pressure 4 bar, **Borofloat glass (Tempax)**, heat resistant up to 280°C

**Model: 3615....**

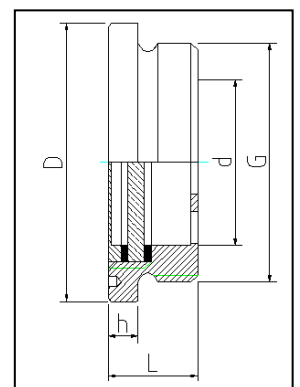
see **3605**, however without reflector

Composition N° Model: Model + Thread-Size

Example: 3505...+...1615 = 35051615 – Brass, M 16x1,5, Float glass to 120°C, with fixed reflector white painted  
 or 3615...+...0100 = 36150100 – Brass, G 1", Tempax to 280°C, without reflector

<b>Metrical ISO-Thread DIN 13</b> (from M 16x1,5 to M 27x1,5)							
Thread (G)	M 16x1,5	M 18x1,5	M 20x1,5	M 22x1,5	M 24x1,5	M 26x1,5	M 27x1,5
N° article (part 2) (Thread-Size)	...1615	...1815	...2015	...2215	...2415	...2615	...2715
<b>Whitworth Thread (BSP) DIN ISO 228 (DIN 259)</b> (from G 3/8" to G 3/4")							
Thread (G)	G 3/8"		G 1/2"				G 3/4"
N° article (part 2) (Thread-Size)	...0038		...0012				...0034
<b>Dimension</b>							
Ø - Outside (D)	22 mm	22 mm	26 mm	26 mm	30 mm	32 mm	32 mm
Ø - Inside (d)	9 mm	9 mm	12 mm	12 mm	15 mm	17 mm	17 mm
Length (L)	12 mm	12 mm	12 mm	12 mm	12 mm	12 mm	12 mm
Collar height (h)	4 mm	4 mm	4 mm	4 mm	4 mm	4 mm	4 mm

<b>Metrical ISO-Thread DIN 13</b> (from M 30x1,5 to M 60x2,0)							
Thread (G)	M 30x1,5	M 33x1,5	M 35x1,5	M 36x1,5	M 42x1,5	M 48x1,5	M 60x2,0
N° article (part 2) (Thread-Size)	...3015	...3305	...3515	...3615	...4215	...4815	...6020
<b>Whitworth Thread (BSP) DIN ISO 228 (DIN 259)</b> (from G 1" to G 2")							
Thread (G)		G 1"			G 1 1/4"	G 1 1/2"	G 2"
N° article (part 2) (Thread-Size)		...0100			...0114	...0112	...0200
<b>Dimension</b>							
Ø - Outside (D)	36 mm	38 mm	42 mm	42 mm	48 mm	55 mm	70 mm
Ø - Inside (d)	20 mm	22 mm	25 mm	25 mm	28 mm	33 mm	43 mm
Length (L)	13 mm	13,5 mm	13,5 mm	13,5 mm	14,5 mm	16 mm	16,5 mm
Collar height (h)	4,5 mm	4,5 mm	4,5 mm	4,5 mm	4,5 mm	5 mm	5 mm



Other thread size, special seals (e.g. Viton) and special glasses, with reflector not painted or types with width across flat on request.

**Group B**  
**Aluminium oil sight glass**  
**Screwed in position from the front**



**Model: 3507....**

With fixed **aluminium** reflector not painted, operating pressure 4 bar, heat resistant up to 120 °C, with **float glass**, in accordance with DIN 31691

**Model: 3517....**

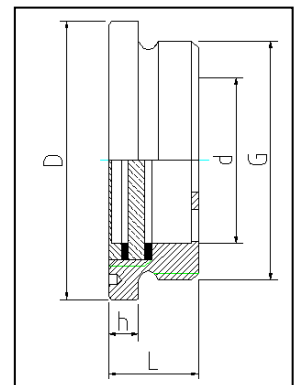
Without reflector, operating pressure 4 bar, heat resistant up to 120 °C, with **float glass**, in accordance with DIN 31691

Composition N° Model: Model + Thread-Size

Example: 3507...+...2215 = 35072215 – Aluminium, M 22x1,5, Float glass to 120 °C, with fixed reflector not painted or 3517...+...0012 = 35170012 – Aluminium, G 1/2", Float glass to 120 °C, without reflector

Metrical ISO-Thread DIN 13 (from M 16x1,5 to M 27x1,5)							
Thread (G)	M 16x1,5	M 18x1,5	M 20x1,5	M 22x1,5	M 24x1,5	M 26x1,5	M 27x1,5
N° article (part 2) (Thread-Size)	...1615	...1815	...2015	...2215	...2415	...2615	...2715
Whitworth Thread (BSP) DIN ISO 228 (DIN 259) (from G 3/8" to G 3/4")							
Thread (G)	G 3/8"		G 1/2"				G 3/4"
N° article (part 2) (Thread-Size)	...0038		...0012				...0034
Dimension							
Ø - Outside (D)	22 mm	22 mm	26 mm	26 mm	30 mm	32 mm	32 mm
Ø - Inside (d)	9 mm	9 mm	12 mm	12 mm	15 mm	17 mm	17 mm
Length (L)	12 mm	12 mm	12 mm	12 mm	12 mm	12 mm	12 mm
Collar height (h)	4 mm	4 mm	4 mm	4 mm	4 mm	4 mm	4 mm

Metrical ISO-Thread DIN 13 (from M 30x1,5 to M 60x2,0)							
Thread (G)	M 30x1,5	M 33x1,5	M 35x1,5	M 36x1,5	M 42x1,5	M 48x1,5	M 60x2,0
N° article (part 2) (Thread-Size)	...3015	...3305	...3515	...3615	...4215	...4815	...6020
Whitworth Thread (BSP) DIN ISO 228 (DIN 259) (from G 1" to G 2")							
Thread (G)		G 1"			G 1 1/4"	G 1 1/2"	G 2"
N° article (part 2) (Thread-Size)		...0100			...0114	...0112	...0200
Dimension							
Ø - Outside (D)	36 mm	38 mm	42 mm	42 mm	48 mm	55 mm	70 mm
Ø - Inside (d)	20 mm	22 mm	25 mm	25 mm	28 mm	33 mm	43 mm
Length (L)	13 mm	13,5 mm	13,5 mm	13,5 mm	14,5 mm	16 mm	16,5 mm
Collar height (h)	4,5 mm	4,5 mm	4,5 mm	4,5 mm	4,5 mm	5 mm	5 mm



Other thread size, special seals (e.g. Viton) and special glasses, with reflector painted white or types with width across flat on request.

**Group BS**  
**Aluminium oil sight glass**  
**hexagon, flanged**



**Model: 5507....**

**Hexagon with fixed aluminium reflector not painted, operating pressure 4 bar, heat resistant up to 120°C, with float glass**

**Model: 5517....**

**Hexagon without reflector, operating pressure 4 bar, heat resistant up to 120°C, with float glass**

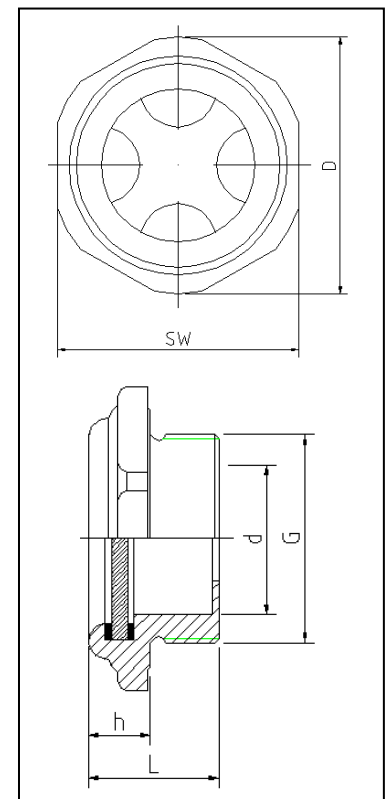
Composition N° Model: Model + Thread-Size

Example: 5507...+...1815 = 55071815 – Aluminium, M 22x1,5, Float glass to 120°C, with fixed reflector not painted  
 or 5517...+...0034 = 55170034 – Aluminium, G 1/2", Float glass to 120°C, without reflector

<b>Metrical ISO-Thread DIN 13</b> (from M 16x1,5 to M 24x1,5)						
Thread (G)	M 16x1,5	M 18x1,5	M 20x1,5	M 22x1,5	M 24x1,5	
N° article (part 2) (Thread-Size)	...1615	...1815	...2015	...2215	...2415	
<b>Whitworth Thread (BSP) DIN ISO 228 (DIN 259)</b> (from G 1/4" to G 1/2")						
Thread (G)	G 1/4" *	G 3/8"		G 1/2"		
N° article (part 2) (Thread-Size)	...0014	...0038		...0012		
<b>Dimension</b>						
Ø - Outside (D)	19 mm	24 mm	24 mm	30 mm	30 mm	33 mm
Width across flats (SW)	SW 17	SW 22	SW 22	SW 27	SW 27	SW 30
Ø - Inside (d)	8,5 mm	12 mm	9 mm	15 mm	15 mm	18 mm
Length (L)	(15 mm)	(14 mm)	(14 mm)	(17 mm)	(17 mm)	(18 mm)
Collar height (h)	(7 mm)	(6 mm)	(6 mm)	(8 mm)	(8 mm)	(8 mm)

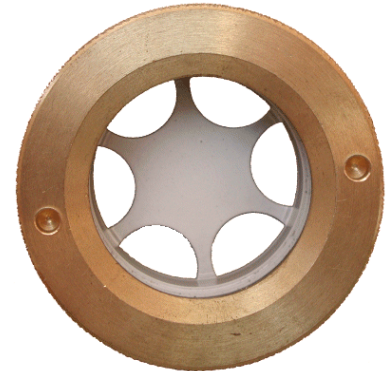
\* G 1/4" only without reflector (N° article: 55170014)

<b>Metrical ISO-Thread DIN 13</b> (from M 26x1,5 to M 33x1,5)						
Thread (G)	M 26x1,5	M 27x1,5	M 33x1,5			
N° article (part 2) (Thread-Size)	...2615	...2715	...3315			
<b>Whitworth Thread (BSP) DIN ISO 228 (DIN 259)</b> (from G 3/4" to G 1")						
Thread (G)		G 3/4"	G 1"			
N° article (part 2) (Thread-Size)		...0034	...0100			
<b>Dimension</b>						
Ø - Outside (D)	35 mm	35 mm	45 mm			
Width across flats (SW)	SW 32	SW 32	SW 41			
Ø - Inside (d)	21 mm	21 mm	25 mm			
Length (L)	(18 mm)	(18 mm)	(20 mm)			
Collar height (h)	(7 mm)	(8 mm)	(9 mm)			



Other thread size, special seals (e.g. Viton) and special glasses or with reflector white painted on request.

**Group C**  
**Brass oil sight glass fittings**  
**Screwed in position from the behind**



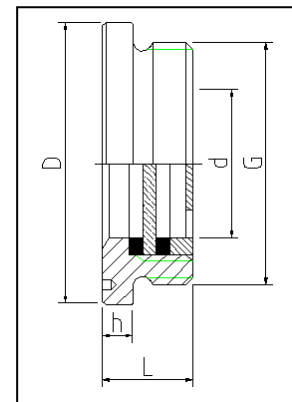
**Model: 4505....**

With fixed **brass** reflector white painted, screwed in position from behind, operating pressure 4 bar, heat resistant up to 120°C, with **float glass**

Composition N° Model: Model + Thread-Size

Example: 4505...+...2015 = 45052015 – Brass, M 20x1,5, Float glass to 120°C, with fixed reflector white painted  
 or 4505...+...0100 = 45050100 – Brass, G 1", Float glass to 120°C, with fixed reflector white painted

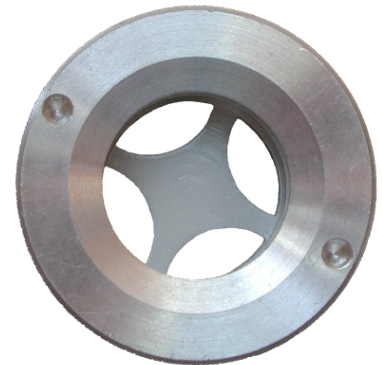
<b>Metrical ISO-Thread DIN 13</b> (from M 16x1,5 to M 30x1,5)						
Thread (G)	M 20x1,5	M 22x1,5	M 24x1,5	M 26x1,5	M 27x1,5	M 30x1,5
N° article (part 2) (Thread-Size)	...2015	...2215	...2415	...2615	...2715	...3015
<b>Whitworth Thread (BSP) DIN ISO 228 (DIN 259)</b> (from G 1/2" to G 3/4")						
Thread (G)	G 1/2"				G 3/4"	
N° article (part 2) (Thread-Size)	...0012				...0034	
<b>Dimension</b>						
Ø - Outside (D)	26 mm	26 mm	30 mm	32 mm	32 mm	36 mm
Ø - Inside (d)	12 mm	12 mm	15 mm	17 mm	17 mm	20 mm
Length (L)	12 mm	12 mm	12 mm	12 mm	12 mm	13 mm
Collar height (h)	4 mm	4 mm	4 mm	4 mm	4 mm	4,5 mm



<b>Metrical ISO-Thread DIN 13</b> (from M 33x1,5 to M 60x2,0)						
Thread (G)	M 33x1,5	M 35x1,5	M 36x1,5	M 42x1,5	M 48x1,5	M 60x2,0
N° article (part 2) (Thread-Size)	...3305	...3515	...3615	...4215	...4815	...6020
<b>Whitworth Thread (BSP) DIN ISO 228 (DIN 259)</b> (from G 1" to G 2")						
Thread (G)	G 1"			G 1 1/4"	G 1 1/2"	G 2"
N° article (part 2) (Thread-Size)	...0100			...0114	...0112	...0200
<b>Dimension</b>						
Ø - Outside (D)	38 mm	42 mm	42 mm	48 mm	55 mm	70 mm
Ø - Inside (d)	22 mm	25 mm	25 mm	28 mm	33 mm	43 mm
Length (L)	13,5 mm	13,5 mm	13,5 mm	14,5 mm	16 mm	16,5 mm
Collar height (h)	4,5 mm	4,5 mm	4,5 mm	4,5 mm	5 mm	5 mm

Other thread size, special seals (e.g. Viton) and special glasses or with reflector not painted on request.

**Group D**  
**Aluminium oil sight glass fittings**  
**Screwed in position from the behind**



**Model: 4507....**

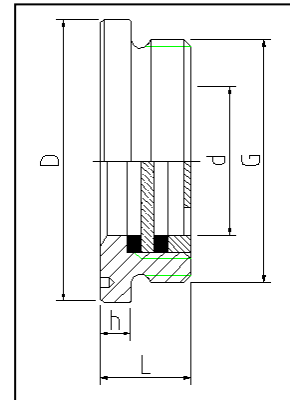
With **Aluminium** reflector not painted, screwed in position from behind, operating pressure 4 bar, heat resistant up to 120°C, with **float glass**

Composition N° Model: Model + Thread-Size

Example: 4507...+...4215 = 45074215 – Aluminium, M 42x1,5, Float glass to 120 °C, with fixed reflector not painted  
 or 4507...+...0112 = 45070112 – Aluminium, G 1 1/2", Float glass to 120 °C, with fixed reflector not painted

<b>Metrical ISO-Thread DIN 13</b> (from M 16x1,5 to M 30x1,5)						
Thread (G)	M 20x1,5	M 22x1,5	M 24x1,5	M 26x1,5	M 27x1,5	M 30x1,5
N° article (part 2) (Thread-Size)	...2015	...2215	...2415	...2615	...2715	...3015
<b>Whitworth Thread (BSP) DIN ISO 228 (DIN 259)</b> (from G 1/2" to G 3/4")						
Thread (G)	G 1/2"				G 3/4"	
N° article (part 2) (Thread-Size)	...0012				...0034	
<b>Dimension</b>						
Ø - Outside (D)	26 mm	26 mm	30 mm	32 mm	32 mm	36 mm
Ø - Inside (d)	12 mm	12 mm	15 mm	17 mm	17 mm	20 mm
Length (L)	12 mm	12 mm	12 mm	12 mm	12 mm	13 mm
Collar height (h)	4 mm	4 mm	4 mm	4 mm	4 mm	4,5 mm

<b>Metrical ISO-Thread DIN 13</b> (from M 33x1,5 to M 60x2,0)						
Thread (G)	M 33x1,5	M 35x1,5	M 36x1,5	M 42x1,5	M 48x1,5	M 60x2,0
N° article (part 2) (Thread-Size)	...3305	...3515	...3615	...4215	...4815	...6020
<b>Whitworth Thread (BSP) DIN ISO 228 (DIN 259)</b> (from G 1" to G 2")						
Thread (G)	G 1"			G 1 1/4"	G 1 1/2"	G 2"
N° article (part 2) (Thread-Size)	...0100			...0114	...0112	...0200
<b>Dimension</b>						
Ø - Outside (D)	38 mm	42 mm	42 mm	48 mm	55 mm	70 mm
Ø - Inside (d)	22 mm	25 mm	25 mm	28 mm	33 mm	43 mm
Length (L)	13,5 mm	13,5 mm	13,5 mm	14,5 mm	16 mm	16,5 mm
Collar height (h)	4,5 mm	4,5 mm	4,5 mm	4,5 mm	5 mm	5 mm



Other thread size, special seals (e.g. Viton) and special glasses or with reflector white painted on request.

**Group VA**  
**Stainless steel oil sight glasses**  
**Screwed in position from the front**



**Model: 3508 and 3509....**

**3508.... 1.4571 (X6CrNiMoTi 17-12-2 , AISI 316 Ti , V4A or similar)**

**3509.... 1.4301 (X5CrNi18-10 , AISI 304 , V2A or similar)**

**Stainless steel** with drilled reflector not painted, operating pressure 4 bar, heat resistant up to 120°C, with **float glass**

**Model: 3608 and 3609....**

**3608.... 1.4571 (X6CrNiMoTi 17-12-2 , AISI 316 Ti , V4A or similar)**

**3609.... 1.4301 (X5CrNi18-10 , AISI 304 , V2A, or similar)**

**Stainless steel** with drilled reflector not painted, operating pressure 4 bar, heat resistant up to 280°C, with **Borofloat glass (Tempax)**

**Model: 3518, 3618 and 3519, 3619....**

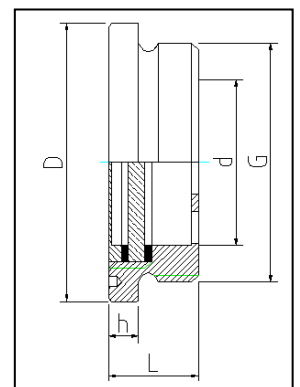
see **3508, 3608 and 3509, 3609**, however without reflector

Composition N° Model: Model + Thread-Size

Example: 3509...+...0200 = 35090200 – AISI 304, G 2", Float glass to 120 °C, with fixed reflector not painted or 3618...+...6020 = 36186020 – AISI 316, M 60x2 , Tempax glass to 280 °C, without reflector

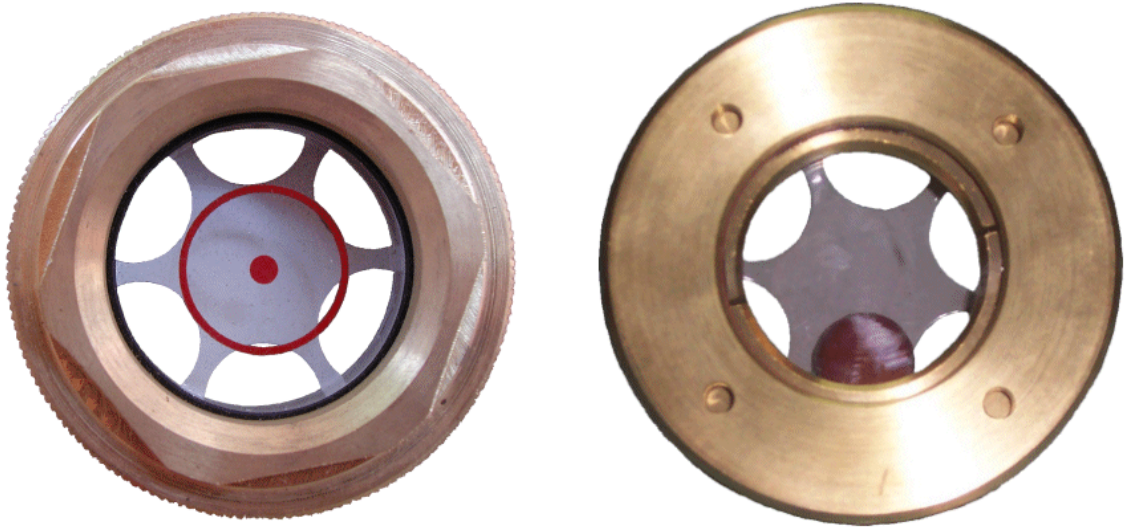
<b>Metrical ISO-Thread DIN 13</b>		(from M 16x1,5 to M 27x1,5)					
Thread (G)	M 16x1,5	M 18x1,5	M 20x1,5	M 22x1,5	M 24x1,5	M 26x1,5	M 27x1,5
N° article (part 2) (Thread-Size)	...1615	...1815	...2015	...2215	...2415	...2615	...2715
<b>Whitworth Thread (BSP) DIN ISO 228 (DIN 259)</b>		(from G 3/8" to G 3/4")					
Thread (G)	G 3/8"		G 1/2"				G 3/4"
N° article (part 2) (Thread-Size)	...0038		...0012				...0034
<b>Dimensions</b>							
Ø - Outside (D)	22 mm	22 mm	26 mm	26 mm	30 mm	32 mm	32 mm
Ø - Inside (d)	9 mm	9 mm	12 mm	12 mm	15 mm	17 mm	17 mm
Length (L)	12 mm	12 mm	12 mm	12 mm	12 mm	12 mm	12 mm
Collar height (h)	4 mm	4 mm	4 mm	4 mm	4 mm	4 mm	4 mm

<b>Metrical ISO-Thread DIN 13</b>		(from M 30x1,5 to M 60x2,0)					
Thread (G)	M 30x1,5	M 33x1,5	M 35x1,5	M 36x1,5	M 42x1,5	M 48x1,5	M 60x2,0
N° article (part 2) (Thread-Size)	...3015	...3305	...3515	...3615	...4215	...4815	...6020
<b>Whitworth Thread (BSP) DIN ISO 228 (DIN 259)</b>		(from G 1" to G 2")					
Thread (G)		G 1"			G 1 1/4"	G 1 1/2"	G 2"
N° article (part 2) (Thread-Size)		...0100			...0114	...0112	...0200
<b>Dimensions</b>							
Ø - Outside (D)	36 mm	38 mm	42 mm	42 mm	48 mm	55 mm	70 mm
Ø - Inside (d)	20 mm	22 mm	25 mm	25 mm	28 mm	33 mm	43 mm
Length (L)	13 mm	13,5 mm	13,5 mm	13,5 mm	14,5 mm	16 mm	16,5 mm
Collar height (h)	4,5 mm	4,5 mm	4,5 mm	4,5 mm	4,5 mm	5 mm	5 mm



Other thread size, special seals (e.g. Viton, PTFE) and special glasses or with reflector white painted on request.

**Group E**  
**Oil sight glass fittings, special types and in accordance with drawing**



Of course, we also produce oil sight fittings to drawings or samples.

Our modern, well-equipped production facilities enable us at any time to produce complete subassemblies at very competitive prices.

Please do not hesitate to contact us - we would be delighted to be able to present our most cost-effective proposals.